

S	M	T	W	T	F	S
31	1	2	3	4	5	6

↑

Monday

S	M	T	W	T	F	S
31	1	2	3	4	5	6

↑

Tuesday

S	M	T	W	T	F	S
31	1	2	3	4	5	6

↑

Wednesday

S	M	T	W	T	F	S
31	1	2	3	4	5	6

↑

Thursday

S	M	T	W	T	F	S
31	1	2	3	4	5	6

↑

Friday

S	M	T	W	T	F	S
31	1	2	3	4	5	6

↑

Saturday

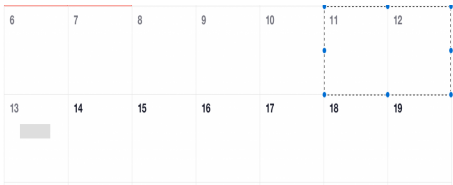
S	M	T	W	T	F	S
31	1	2	3	4	5	6

↑

Sunday



last week



last weekend



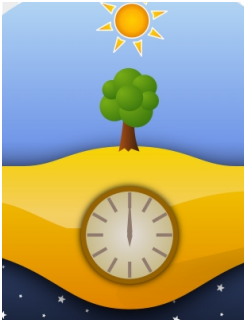
last night



yesterday



today



in the afternoon



in the morning



in the evening



now